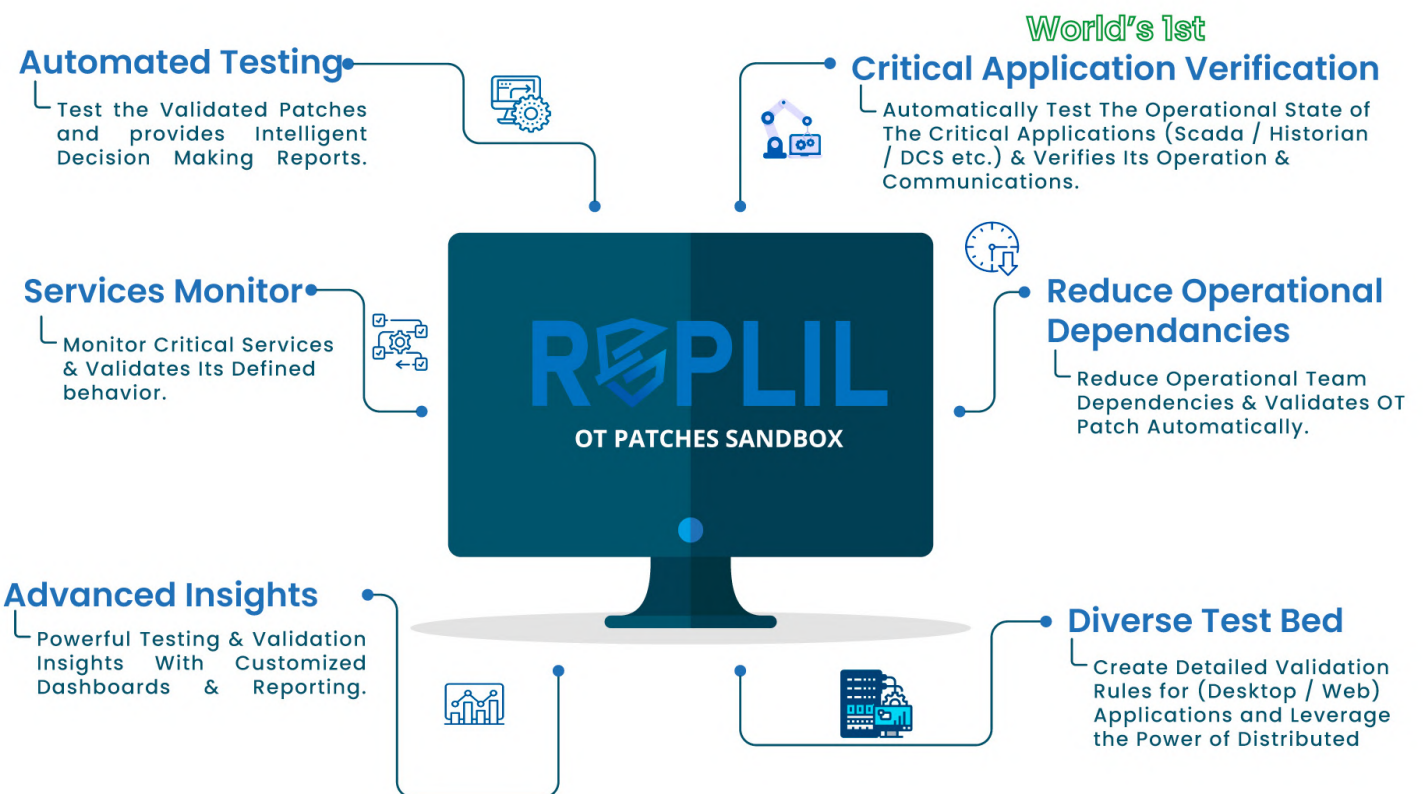


REPLIL OT PATCH SANDBOX

DATASHEET

PRODUCT OVERVIEW

REPLIL OT Patch Sandbox is an innovative tool designed for automated testing of patches in an isolated environment, ensuring compliance with the IEC 62443-2-3 standard. It delivers enhanced analytics and is the world's first solution to provide test case validation specifically for OT (Operational Technology) applications. This tool significantly reduces the reliance on OT operational teams for validating application operations, connectivity, and services.



REPLIL OT PATCH SANDBOX

DATASHEET

KEY FEATURES



Automated Patch Testing: Enables seamless automated testing of patches in an isolated sandbox environment.



IEC 62443-2-3 Compliance: Ensures testing processes meet international cybersecurity standards for industrial automation and control systems.



Enhanced Analytics: Provides in-depth analysis of test results to identify potential issues and ensure patch effectiveness.



Services / Registry Monitoring: Provides monitoring capabilities to identify changes to critical services, registry.



OT Applications Test Case Validation: First-of-its-kind feature offering comprehensive validation of test cases for OT applications. Ensures application connectivity and services are correctly validated post-patch.



Operational Independence: Minimizes the need for OT operational team involvement in the validation process.



Data-Driven Decision Making: Leverage comprehensive analytics to make informed decisions about patch deployment.



Customizable Dashboards: Offers flexible, user-friendly dashboards that can be tailored to specific needs using a drag-and-drop builder.



Customizable Reports: Generates detailed reports that can be customized to fit specific requirements, enhancing the clarity and usefulness of the data presented.

BENEFITS

- **Improved Security:** Proactive patch testing minimizes security risks associated with deploying untested patches.
- **Compliance Assurance:** Guarantees adherence to IEC 62443-2-3 standards, bolstering cybersecurity defenses.
- **Reduced Operational Burden:** Frees up OT operational teams by automating and validating patch testing processes.
- **Improved Accuracy:** Provides accurate, reliable validation of patches and applications, reducing the risk of errors.
- **Time Efficiency:** Accelerates the testing and validation process, allowing for quicker deployment of patches.
- **Enhanced Decision-Making:** Offers comprehensive analytics and customizable reports that support better decision-making.
- **User-Friendly Interface:** Simplifies the process of monitoring and managing test results with intuitive dashboards and reports.

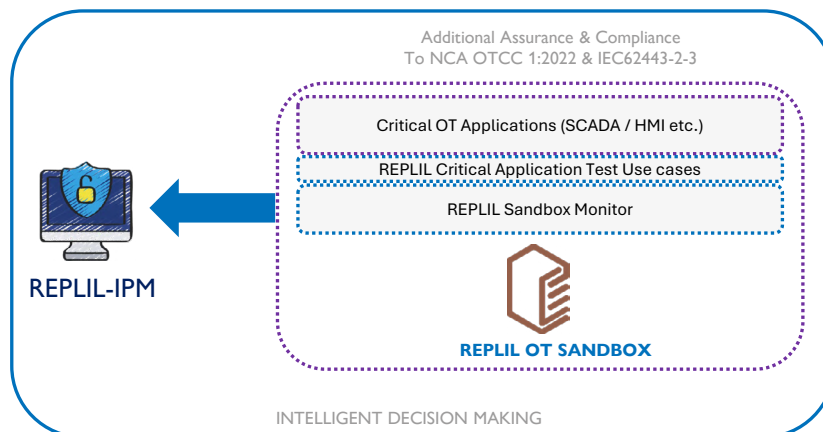
TECHNICAL SPECIFICATIONS

- **Compliance:** IEC 62443-2-3
- **Analytics:** Advanced data analysis tools for detailed reporting
- **Dashboard:** Customizable, drag-and-drop interface
- **Reports:** Tailored report generation capabilities
- **Environment:** Isolated sandbox for secure testing
- **Validation:** World's first test case validation for OT applications
- **Support:** Comprehensive support and updates



REPLIL OT PATCH SANDBOX

DATASHEET



VERSION COMPARISON

Features	Base License	Advance License
Patch Applicability	✓	✓
Patch Installation	✓	✓
Services Monitoring	✓	✓
Registry Monitoring	✓	✓
Diverse Test Environments	✓	✓
Legacy Operating Systems	✓	(Refer to System Specifications)
OT Application Test Builder		✓
Test Cases Storage Server		✓
Web based Executive Reporting		✓
OT Application Test Execution Server		✓

ADVANCE OT TEST CASES REQUIREMENTS

Desktop Applications	<ul style="list-style-type: none">All Windows desktop applications supporting the Microsoft UI Automation framework, including applications containing custom controls that provide the required automation peers.WPF for .NET Framework 4.5+, .NET Core 3.1, .NET 5, .NET 6, .NET 7, .NET 8		
Web Applications	Internet Explorer 11; Latest Edge Chromium, Latest Chrome, Latest Firefox		
System Requirements:	Disk Space: 3GB+	CPU: 2.2 GHz+	RAM: 6GB+
Supported Operating Systems	Windows 10, Windows 11, Windows Server 2008, Windows Server 2012, Windows Server 2016, Windows Server 2019, Windows Server 2022		
Screen Resolution	1920 x 1080		

OEM HARDWARE:

Different Configuration of RAM / Storage / CPU can be provided as per the testing systems requirements.



7969 NW 2nd Street #1013
Miami 33126 Unites States



(+1) 805 742 4848



sales@replil.com



www.replil.com